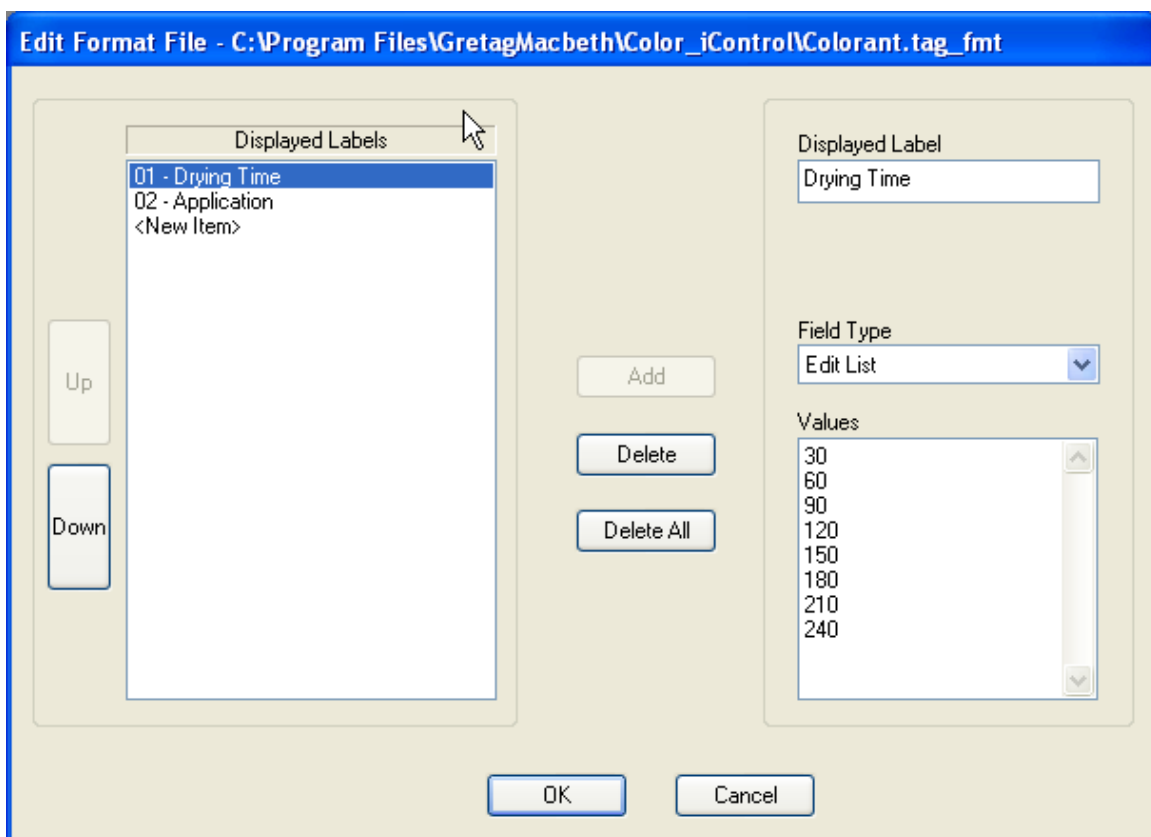




COLORANT RULES IN COLOR iMATCH

Colorant Rules in formulation is used to select a set of colorants out of all the current colorants available to be used for formulation. It is like creating a group of colorants on the fly. For example if you need to match a shade with paint but need it to dry quickly they you can specify a rule for drying time to be equal to or shorter that 30 minutes. When you choose this rule in formulation it will look through the colorants available and select only those that you have set to have drying times of 30 minutes or less. To use Colorant Rules you can define up to 30 tags / information you want to track or group by, enter the actual information into each colorant, then create a rule for use in formulation.

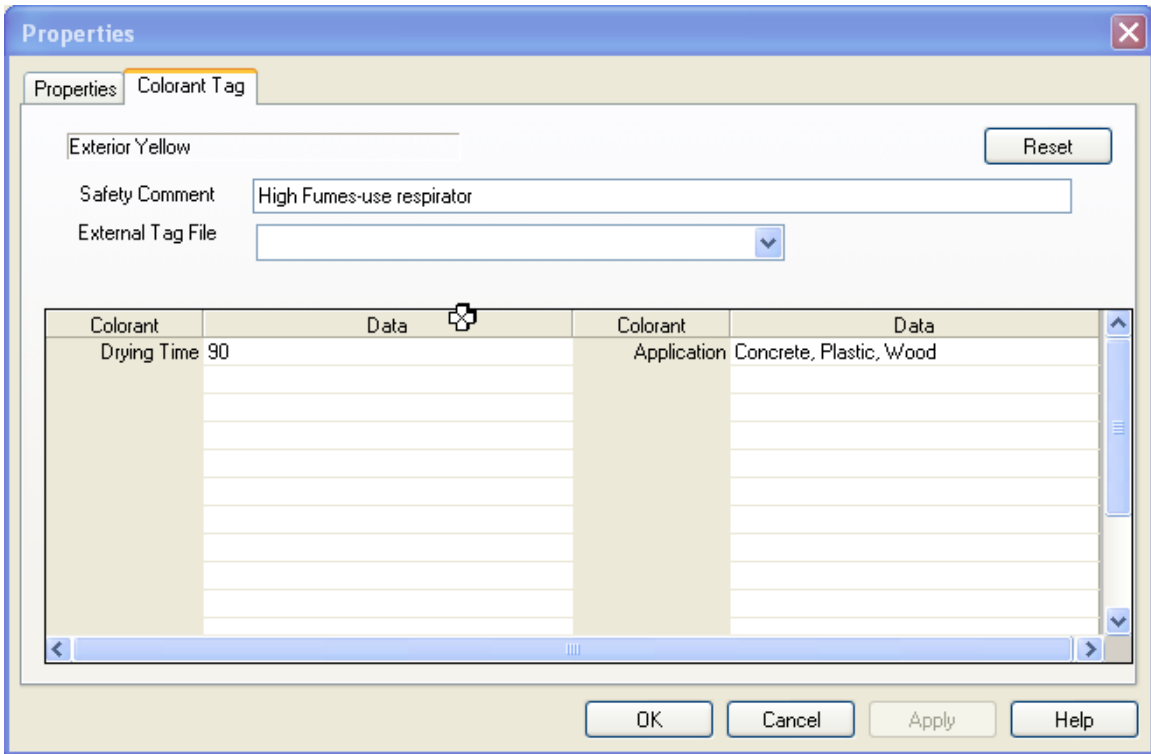
First you will need to setup Colorant Tags. This is a one time setup and will be used for all colorants in the system. To setup colorant tags you will enter Color iMatch and close all e-Jobs. Then go to the Settings menu and choose Setup Colorant Tagging.



To create tags, click on <New Item> in the left box and then enter a name for the label under Displayed Label on the right. Then choose the type of entry you would like for this type of tag. Field Types are Text Edit [free entry], Drop List [will be presented with a drop down list and much choose from the list], Edit List [will be presented with a drop down list but can type in data], MultiSelect [will be presented with a drop down list and can select more than on item]. For the above example there are only two tags named Drying Time with an edit list and Application with a

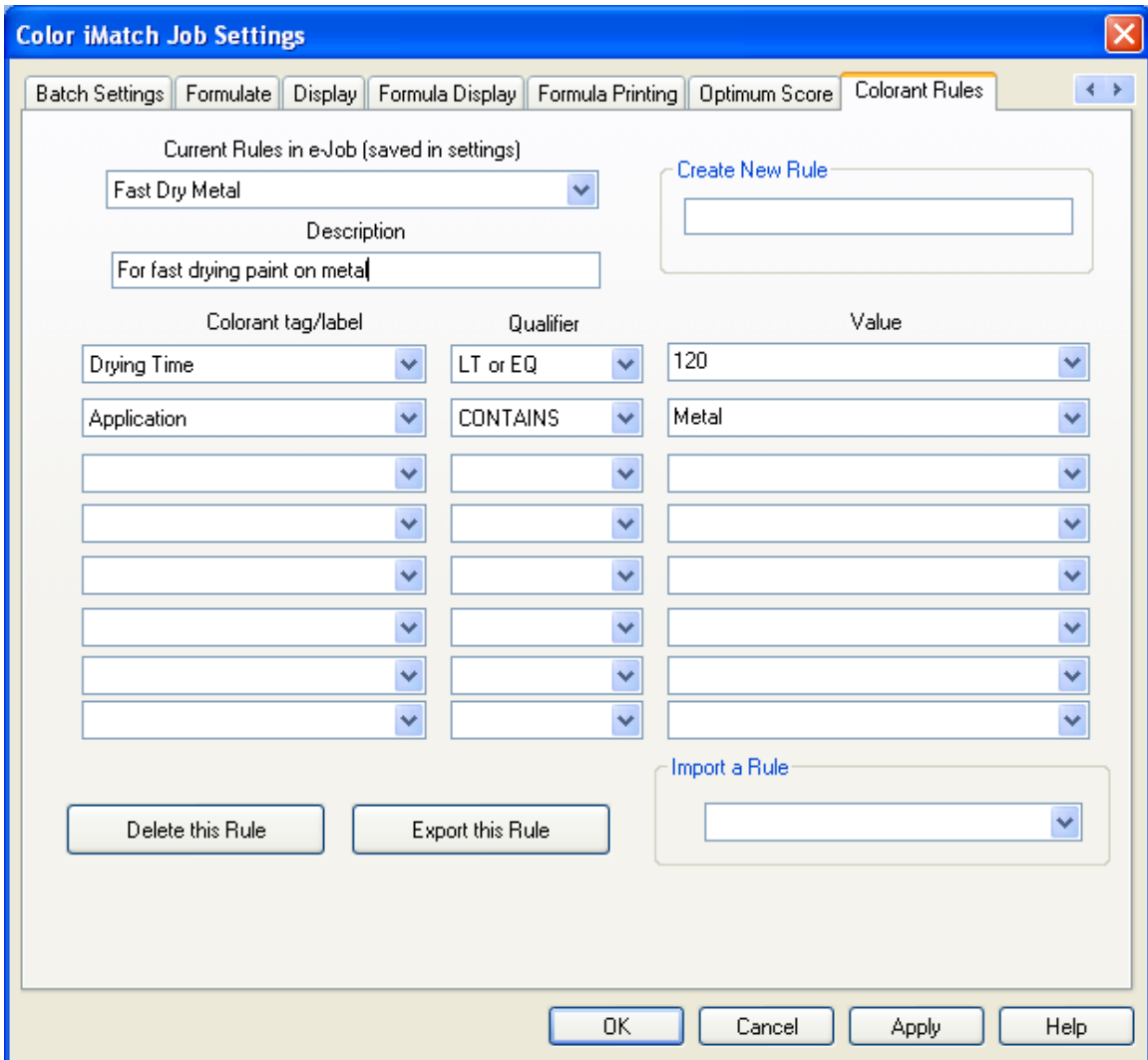
multi select. I added values to each list that will appear in the drop down on each colorant. Once you have created all the tags you wish to use then click OK and it will save the colorant tagging information.

Next you will need to edit each colorant and put the correct values in for each of the tags. To do this, open an e-Job that has colorants in it or import colorants from an IFS file or from the database. Then from the List View right click on one of the colorants and go to Properties. On the properties of a colorant there will be a Colorant Tagging tab that will have the tags you setup and blank values. Enter in the values needed for each tag using the drop down or hand entering.

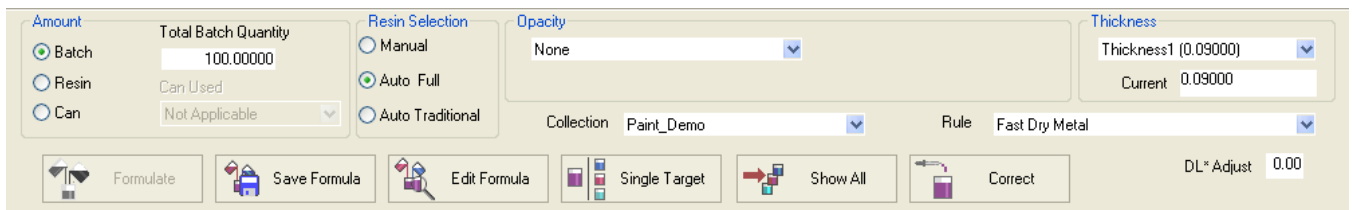


There is also a space for a Safety Comment. In formulation a formula will have an exclamation point to the right of the formula number indicating that at least one of the colorants has a safety comment. If you right click on the formula number you have an option to “View Safety warnings associated with this formula”.

The last thing is to create a rule to use. For example you have 30 colorants available. Of these 30 colorants the drying times vary and the application varies for each. You want to do a formulation but use only colorants that can dry within 120 minutes and can be applied to metal. So you create a rule. With an e-Job open go into the formulation mode. Then go to Settings [Pencil and paper icon]. The last tab will be Colorant Rules. The number of tabs and what is on those tabs in settings will depend on how your system is configured. Under the Colorant Rules tab you can enter in a name for your rule in the Create New Rule block. This will be in the drop down in formulation as a rule to choose. You can add a description for your own notes. Then you can create up to eight filters. In the example below we have drying time is equal to or less than 120 and Application contains metal. The qualifiers are abbreviations for EQ is Equals can be text or number, LT is Less Than and must be number, GT is Greater Than and must be number, LT or EQ is Less than or equal to and must be a number, GT or EQ is Greater Than or Equal To and must be a number, NOT EQ is Not Equal and must be a number, CONTAINS is Contains and can be text or number, NOT CONTAIN is Not Contains and can be text or number. Contains and Not Contains should be used especially on multi select fields.



Then in formulation you will have a drop down box on the right side containing all the colorant rules you have created. When you select one of the rules such as Fast Dry Metal then only the colorants meeting those requirements will be used for formulation. So out of the 30 colorants only 12 meet the fast dry metal rule and will be used for formulation.



When using a rule you will not be able to select or deselect individually colorants. You will need to select no rule to manually select colorants.