

# ColorCert Analysis Modes

## Version History

- August 7<sup>th</sup> 2015 - Version 1.0
- March 31<sup>st</sup> 2017 - Version 1.1 (Updated support links)

## Scope

---

This document describes the definition and usage of different Analysis Modes in ColorCert. How to define Custom Mediastrips as required in one of the Modes is explained in a different document.

## Solution Summary

---

When you analyse the values of a Mediastrip the patches typically have different check functions. Solids are checked against a color target values and tints against dot gain or undercolors.

If you want to analyse all patches of a Mediastrip against a color target values this is now possible using the new Analysis Mode Color Only.

The Color Only Mode in combination with a IT8/CGATS file even allows you to check any value of the Chart in the Chart Lookup Mode.

## Analysis Modes

### Default Mode

- Check quality based on standards such as color and dot gain
- Use color profiles of any kind as a target

### Color Only Mode

- Check quality based on color only on all kind of patches
- Use color profiles of any kind as a target

### Chart Lookup Mode

- Check quality based on color only on all kind of patches
- requires a IT8/CGATS file as a Profile as it refers to individual patches
- requires a Custom Mediastrip based on the chart content

## Requirements

---

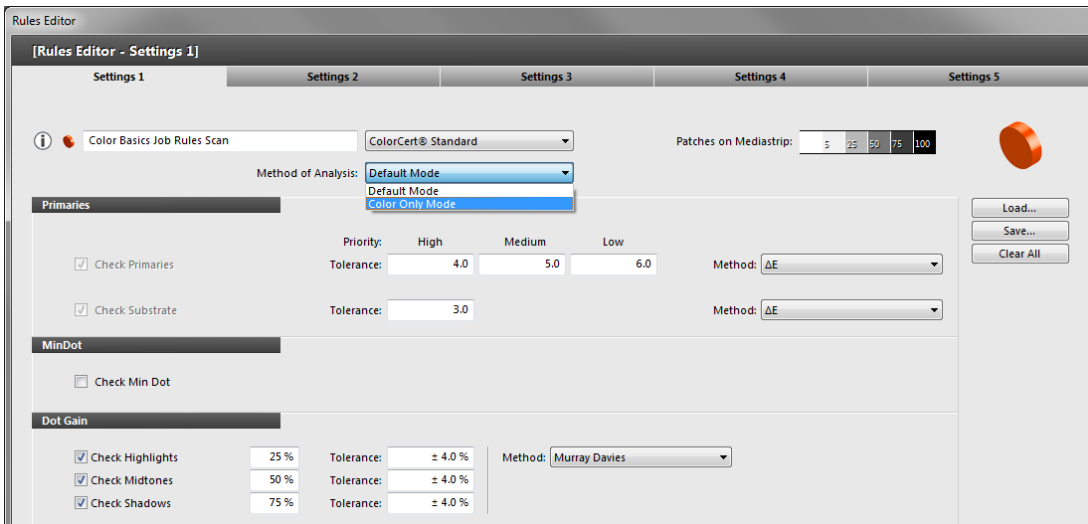
- ColorCert Manager 2.6 to select the Analysis Modes in the Rules
- ColorCert Pressroom Client 2.6 or ColorCert Pressroom Essentials Client 2.6 to use jobs with any Analysis Mode
- Useful samples and information from the ColorCert support website <http://www.xrite.com/service-support/product-support/formulation-and-qc-software/colorcert-desktop-tools>
  - Color Basics for Pressroom (Rev. B) (physical sample sheet in the eXact box)
  - ColorCert Color Basics Sample Data
  - ColorCert Startup and Configuration Guide
  - ColorCert Custom Mediastrip

## Defining Analysis Modes in the Rules

This can be done with the ColorCert Manager.

### Analysis Mode Color Only

1. In the **ColorCert Chooser** click **Editors** and select **Rules Editor**.
2. Load or Create your **Rule** as usual.
3. On **Settings 1** Tab you can select the **Method of Analysis**.



Rules Editor  
[Rules Editor - Settings 1]

Settings 1 Settings 2 Settings 3 Settings 4 Settings 5

Color Basics Job Rules Scan ColorCert® Standard Patches on Mediastrip: 5 25 50 75 100

Method of Analysis: Default Mode  
Color Only Mode

**Primaries**

Check Primaries Priority: High Medium Low Tolerance: 4.0 5.0 6.0 Method:  $\Delta E$

Check Substrate Tolerance: 3.0 Method:  $\Delta E$

**MinDot**

Check Min Dot

**Dot Gain**

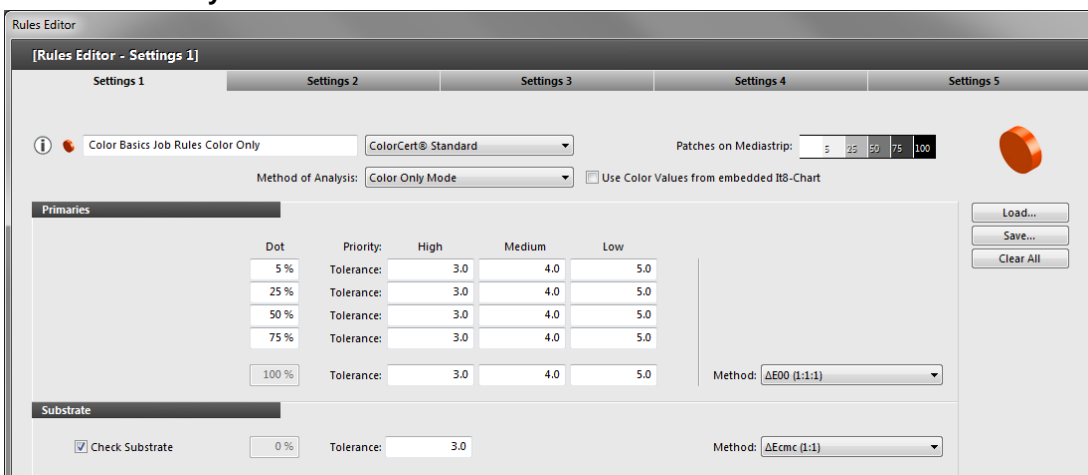
Check Highlights 25 % Tolerance:  $\pm 4.0$  % Method: Murray Davies

Check Midtones 50 % Tolerance:  $\pm 4.0$  %

Check Shadows 75 % Tolerance:  $\pm 4.0$  %

Buttons: Load... Save... Clear All

4. Select **Color Only Mode**.



Rules Editor  
[Rules Editor - Settings 1]

Settings 1 Settings 2 Settings 3 Settings 4 Settings 5

Color Basics Job Rules Color Only ColorCert® Standard Patches on Mediastrip: 5 25 50 75 100

Method of Analysis: Color Only Mode  Use Color Values from embedded IT8-Chart

**Primaries**

Dot	Priority: High	Medium	Low
5 %	Tolerance: 3.0	4.0	5.0
25 %	Tolerance: 3.0	4.0	5.0
50 %	Tolerance: 3.0	4.0	5.0
75 %	Tolerance: 3.0	4.0	5.0
100 %	Tolerance: 3.0	4.0	5.0

Method:  $\Delta E00$  (1:1:1)

**Substrate**

Check Substrate 0 % Tolerance: 3.0 Method:  $\Delta E_{cmc}$  (1:1)

Buttons: Load... Save... Clear All

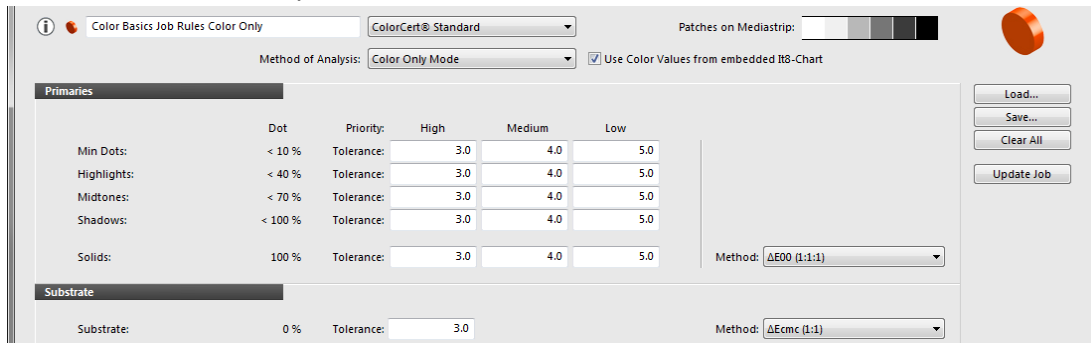
The Functions Min dot and Dot Gain (as well as Undertones on Settings 2) are removed, but you can now define  $\Delta E$  tolerances for four tint values and the Solid. For each you can have the three priorities as usual. You can now enter the relevant  $\Delta E$  tolerances and the  $\Delta E$  Method.

5. Continue creating or amending your **Rules** as usual and **Save** it.

**NOTE:** To create a Job with Color Only Mode you need a profile with properly defined inks (solid including tints) as Primaries, such as ColorCert Inks, ICC or IT8/CGATS.

## Analysis Mode Color Only with Chart Lookup

1. In the Rules Editor on Settings 1 Tab click **Use Color Values from embedded IT8-Chart** to activate the Chart Lookup Mode.



Dot	Priority:	High	Medium	Low
Min Dots: < 10 %	Tolerance:	3.0	4.0	5.0
Highlights: < 40 %	Tolerance:	3.0	4.0	5.0
Midtones: < 70 %	Tolerance:	3.0	4.0	5.0
Shadows: < 100 %	Tolerance:	3.0	4.0	5.0
Solids: 100 %	Tolerance:	3.0	4.0	5.0

The Dot Values are now defined as a range instead of a specific tint as the tint is only defined when you create the Custom Mediastrip. You can now define  $\Delta E$  tolerances for four tint ranges and the Solid. For each you can have the three priorities as usual

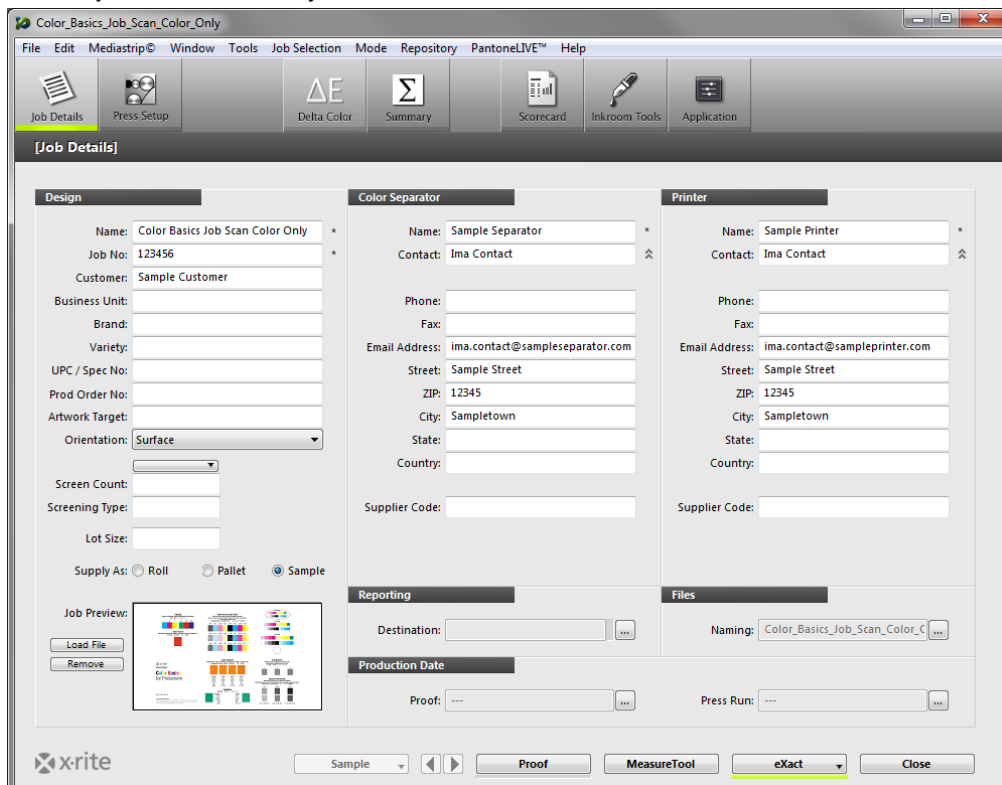
2. Continue creating or amending your **Rules** as usual and **Save** it.

**NOTE:** To create a Job with Chart Lookup Mode you need an IT8/CGATS file as a Profile and a Custom Mediastrip based on this file. See separate document for Custom Mediastrip.

## Using a ColorCert Job in Color Only Mode

This can be done with the ColorCert Manager, ColorCert Pressroom Client or ColorCert Pressroom Essentials Client.

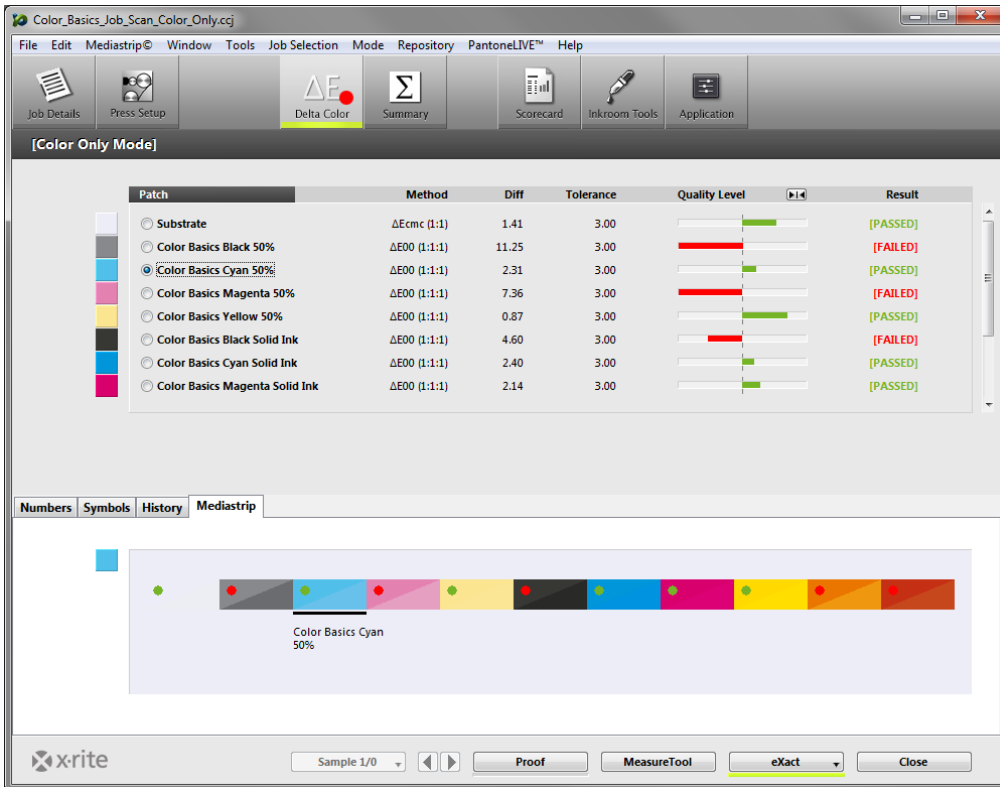
1. Load a job with Color Only Mode as usual



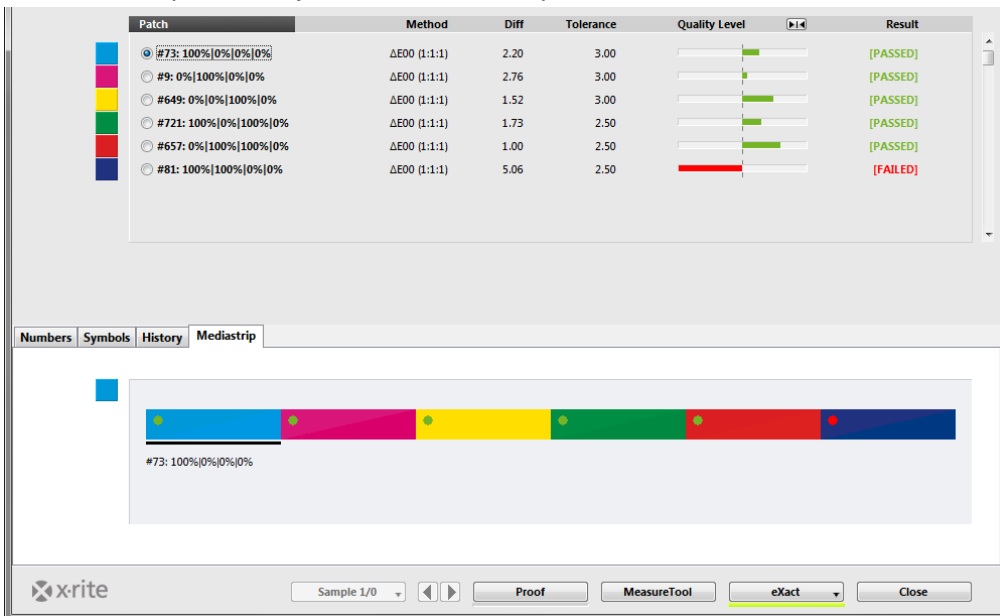
**NOTE:** The Toolbar now has just one Delta Color Button instead of Primaries, Spot Colors, Dot Gain, Min Dot or Undertones.

2. **Measure** as usual.

3. Click **Delta Color**. You will see the results of all patches in one list.
4. Select the **Mediastrip Tab**. The measured patches are displayed in the order of measurement and show red or green circles if they have passed or failed.



Here an example from a job with Chart Lookup Mode:



**Note:** If you have duplicated patches in your Custom Mediastrip you will see each patch result here to analyze them separately, although they will be averaged for the score.

5. Continue to **Measure, Analyze** and **Save** as usual.