

## Bar Code Scanning with ColorDesigner PLUS

---

### ColorDesigner PLUS can use bar codes in the following ways:

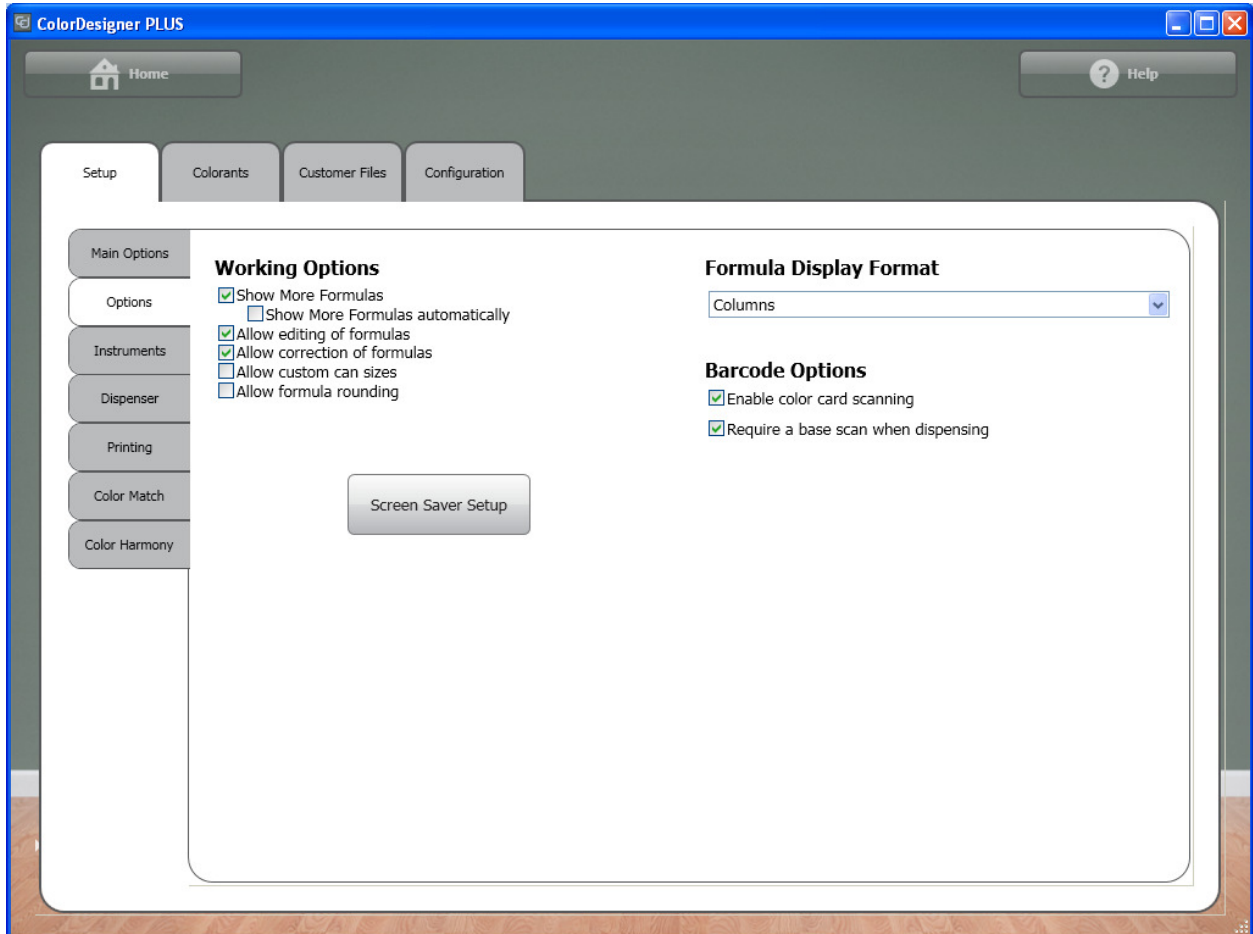
1. Send UPC/EAN code of the paint base to dispenser software, to be scanned there.
2. Scan UPC/EAN code of the paint base in ColorDesigner PLUS before dispensing.
3. Scan the bar code on a paint chip to look up the color (instead of typing the color name or color number).

UPC/EAN code handling verifies that the operator has the correct paint base and can size, so it eliminates one cause of mistints. To support UPC/EAN code handling (either of the first two features), the paint line database (Electronic Formula Book or Color Matching Database) must contain the UPC/EAN code for each base-can size combination.

### Each feature is enabled or disabled as follows:

1. Sending UPC/EAN code to dispenser software is *always* enabled, provided the following conditions are met:
  - The paint line database must contain a UPC/EAN code for the selected paint base-can size.
  - The selected dispenser protocol must support the transmission of the UPC/EAN code.
2. Scanning the UPC/EAN code in ColorDesigner PLUS is enabled and disabled in Settings. See the **Require a base scan when dispensing** checkbox.
3. Scanning a paint chip bar code to look up a color is enabled and disabled in Settings. See the **Enable color card scanning** checkbox.

(An image of the Settings screen is on the following page)



## Recommended Scanner Configuration

For best scanning performance in ColorDesigner PLUS, configure your scanner to behave as follows:

- Transmit a question mark (?) before the bar code
- Transmit a question mark (?) and the <Enter> key after the bar code

Note: The scanner needs to be configured differently for use with non-English keyboards. See the documentation that came with your scanner for instructions.

### Configuration for Symbol LS4208 Scanner with an English Keyboard

To configure a Symbol LS4208 scanner, simply scan all the bar codes on this page in order.



**Begin New Rule**



**Send ?**



**Send All Data That Remains**



**Send ?**



**Send Enter Key**



**Save Rule**



**Quit Entering Rules**

## Other Useful Settings for Symbol LS408 Scanners

### Reset scanner to factory defaults



**Set Factory Defaults**

### Set beeper to low volume



**Low Volume**